

4233 COULTER CHISEL

Big-Acreage Capacity And Performance

The Sunflower Model 4233 Coulters Chisel is the obvious answer for large-acreage farmers who need to take fall tillage to a higher level of productivity. Designed to handle higher horsepower tractors, the 4233 features the same heavy-duty construction as the 4213, but in three-section, 17 through 23 shank configurations. Yet, its flexible frame easily conforms to changing field contours.

Spring-cushioned coulters gangs feature 7 1/2" blade spacing to effectively manage residue levels, while ground-penetrating shanks open the field for maximum moisture absorption. Don't take a chance of not getting over fields after harvest or delaying planting of next year's crop. Put the 4233 to work for acreage-eating performance.

Sunflower - The Ultimate Answer



4233 SHANK OPTIONS

RIGID SHEARBOLT

A maximum point load of 1,500 lbs. with a range of points to control residue.



AUTO-RESET

A maximum point load of 1,500 lbs. with a vertical trip height of 13".



1. OPTIONAL OFFSET SHANK MODULES - These modules can be added to the rear bar of the machine, providing even more clearance for demanding residue.

2. STANDARD WALKING TANDEM - Standard walking tandems minimize frame bounce and uneven penetration.

3. HEAVY-DUTY TRASH BARS - Heavy-duty 3" wide channel iron trash bars are mounted between each coulters blade keeping the gangs clear of residue and dirt buildup.

4. C-FLEX™ COULTERS GANG HANGERS - Shock-absorbing mounts protect against field obstructions. Spring end collars help ensure the gang stays properly torqued. Coulters gangs minimize plugging or need for shredding or discing before ripping.

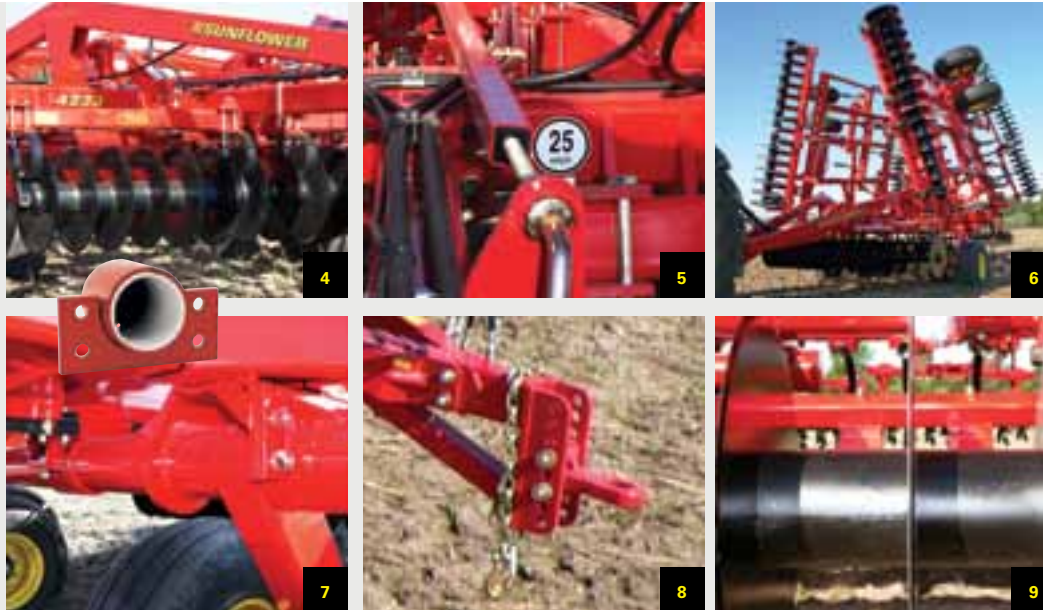
5. SIMPLE, EASY ADJUSTMENT - Single-point depth control for a simple, easy adjustment. Sets the depth for the entire machine from one convenient location.

6. FLEXIBLE FRAMES - Designed with flexible frames for all types of terrain and folds to a narrow 14'6" transport width.

7. HEAVY-DUTY FRAME - An all-welded 4" x 6" x 3/8" frame with special formed gussets in all high stress areas. UHMW technology around the rock shafts means no greasing needed and less parts wear.

8. SINGLE OR DOUBLE CLEVIS ADJUSTABLE HITCH - Either a single or double clevis adjustable hitch is available to allow front-to-rear leveling of the machine.

9. HEAVY-DUTY SEPARATING SPOOLS - Each spool weighs 50 lbs., enough weight to slice through heavy residue. Gangs feature two rephasing lift hydraulic cylinders (protected by shock-absorbing mounts) to control the front gang depths with on-the-go adjustments.



4233 COULTER CHISEL SPECS

| MODEL NUMBER | CUTTING WIDTH (m) | NUMBER OF SHANKS | SHANK SPACING (mm) | TRANSPORT WIDTH (m) | TRANSPORT HEIGHT (m) | NUMBER OF COULTERS | EST. WEIGHT RIGID SHANKS (kg) | EST. WEIGHT AUTO RESET (kg) |
|--------------|-------------------|------------------|--------------------|---------------------|----------------------|--------------------|-------------------------------|-----------------------------|
| 4233-17 | 21'-3" (6.5) | 17 | 15" (381) | 14'-6" (4.4) | 10'-3" (3.1) | 34 | 12,804 lbs. (5808) | 14,487 lbs. (6571) |
| 4233-19 | 23'-9" (7.2) | 19 | 15" (381) | 14'-6" (4.4) | 11'-7" (3.5) | 38 | 13,410 lbs. (6082) | 15,291 lbs. (6936) |
| 4233-21 | 26'-3" (8) | 21 | 15" (381) | 14'-6" (4.4) | 13'-1" (4) | 42 | 14,364 lbs. (6515) | 16,443 lbs. (7458) |
| 4233-23 | 28'-9" (8.8) | 23 | 15" (381) | 14'-6" (4.4) | 14' (4.3) | 46 | 14,770 lbs. (6699) | 17,047 lbs. (7732) |

OPERATION:

- Leave more residue by switching from twisted shovels to straight points.
- Run the shanks 1-2" below the compacted layer.

Note: Above specifications may vary slightly based on tires, hydraulic system, or other possible variances.

We are continually striving to improve our machines; therefore, these specifications are subject to change without notice.