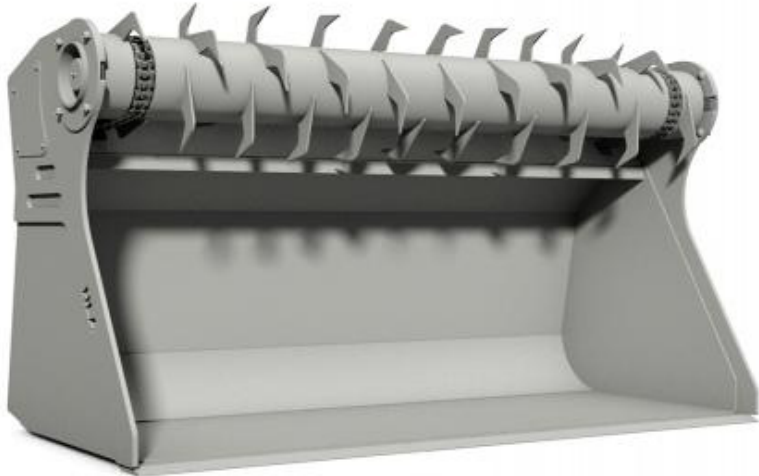


Silage Facer - Bucket Mount



- Minimum 20 GPM required
- Maximum flow 40 GPM
- Facing drum mounted on bucket
- 400 Brinell high tensile steel teeth on drum
- Dual drive motors
- Heavy duty roller drive chains
- Includes hose kit and flat-faced couplers

Part Number	Description	INSIDE WIDTH INCHES	STRUCK CAP. CU. FT.	HEAPED CAP. CU. FT.	APPROX. WEIGHT LBS.
MBHVSbfd72	72" Silage Facer/ Bucket Mounted	72	28.5	35.6	1160
MBHVSbfd84	84" Silage Facer/ Bucket Mounted	84	33.3	41.6	1275
MBHVSbfd96	96" Silage Facer/ Bucket Mounted	96	38.1	47.5	1385
THMBSbfd96	96" Silage Facer/ Bucket Mounted On Telehandler Bucket	96	54	59.4	1780
SHMK	Optional Spring Hose Mount Kit				

<http://hlaattachments.com/item.php?prod=33>

1.866.567.4162